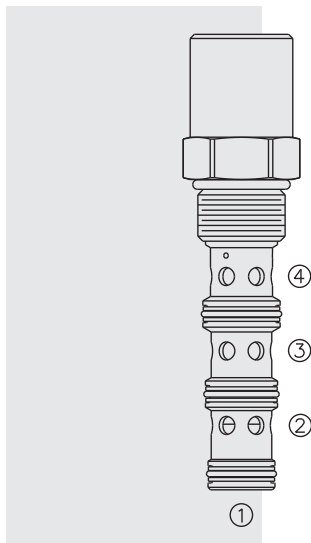


# EC12-42 Pressure Compensator, Priority-on-Demand



## DESCRIPTION

A screw-in, cartridge-style, priority-on-demand, pressure compensator with static load sense intended to provide priority flow in the required amount, while allowing excess flow to be used for auxiliary functions.

## OPERATION

With inlet flow at port 3, the **EC12-42** will deliver required priority flow at port 4, based on the size of the external orifice, regardless of load pressure. Excess flow exits, or is bypassed, at port 2. Port 1 is the load sense port. All ports may be fully pressurized.

## FEATURES

- Priority-on-demand.
- Static load sense.
- Hardened parts for long life.
- Quiet, modulated response.
- Industry common cavity.

## RATINGS

**Operating Pressure:** Inlet: 345 bar (5000 psi);

Note: Ductile iron body and polyurethane seals required when used above 241 bar (3500 psi).

**Maximum Input Flow Rate:** 95 lpm (25 gpm) with 160 psi compensating spring;  
68 lpm (18 gpm) with 80 psi compensating spring

**Priority Flow Rate:** Up to 80% of input flow

**Flow Maintenance:** See performance chart

**Temperature:** -40 to 100°C (-40 to 212°F) with Buna N seals;

-26 to 204°C (-15 to 400°F) with fluorocarbon seals;

-54 to 107°C (-56 to 225°F) with polyurethane seals.

**Filtration:** See page 9.010.1

**Fluids:** Mineral-based or synthetics with lubricating properties at viscosities of 7.4 to 420 cSt (50 to 2000 sus); See Temperature and Oil Viscosity, page 9.060.1

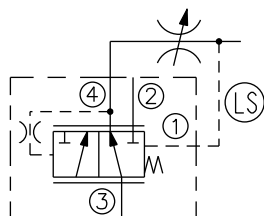
**Installation:** No restrictions; See page 9.020.1

**Cavity:** VC12-4; See page 9.112.1

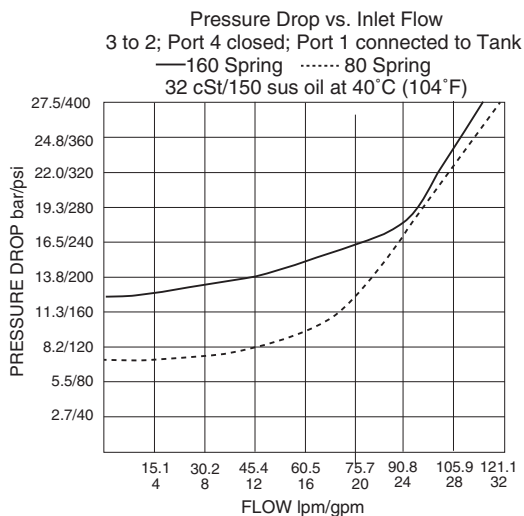
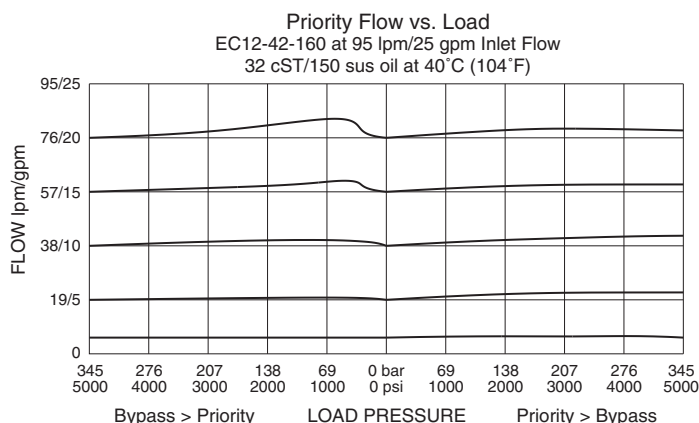
**Cavity Tool:** CT12-4-XXX; See page 8.600.1

**Seal Kit:** SK12-4X-MMM; See page 8.650.1

## ISO SYMBOL



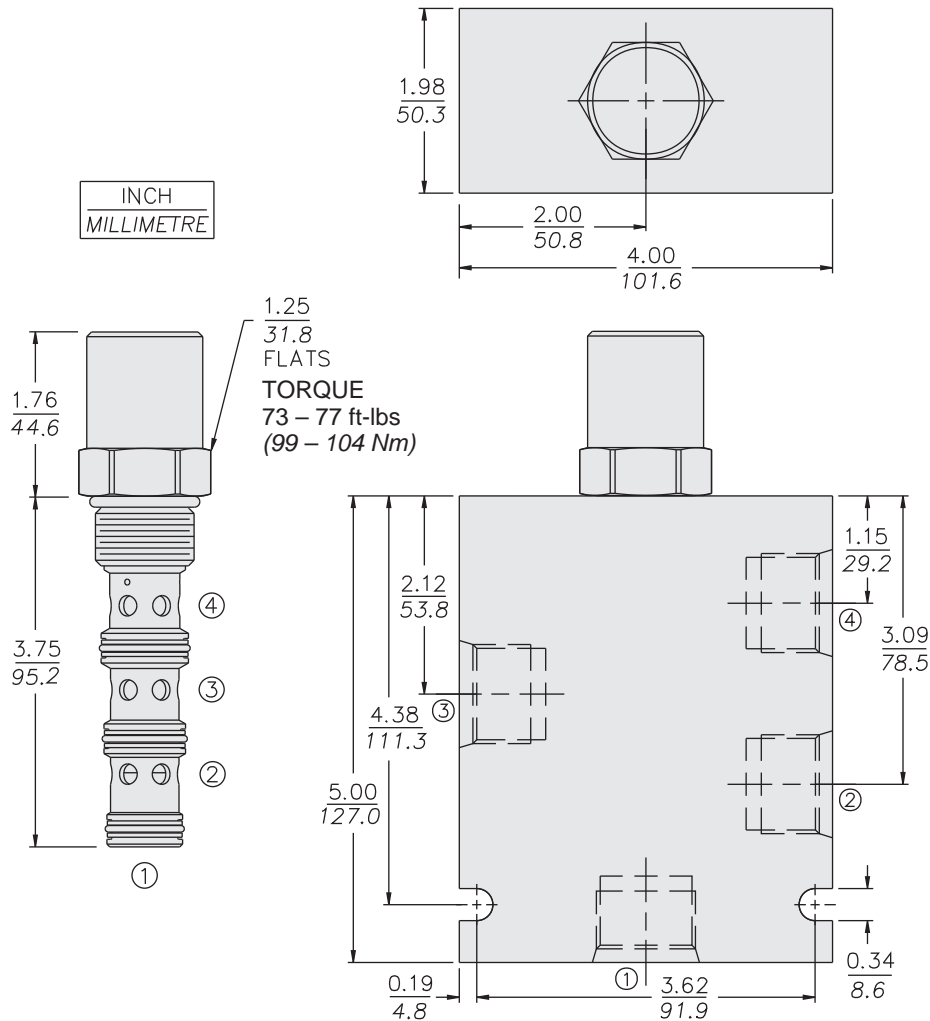
## PERFORMANCE (Cartridge Only)



# with Static Load Sense

# EC12-42

## DIMENSIONS




## MATERIALS

**Cartridge:** Weight: 0.43 kg. (0.94 lbs.)  
Steel with hardened work surfaces.  
Zinc-plated exposed surfaces.  
Buna N O-rings and polyester elastomer back-ups standard. For operating pressures above 241 bar (3500 psi), use polyurethane seals.

**Standard Ported Body:** Weight: 1.50 kg. (3.30 lbs.) Anodized high-strength aluminum alloy, rated to 207 bar (3000 psi). For operating pressures above 241 bar (3500 psi), use ductile iron bodies; dimensions may differ. See page 8.012.1

## TO ORDER

<b>EC12-42 -</b>			-	-
				
<b><u>Porting</u></b>				<b><u>Compensator Spring</u></b>
Cartridge Only	<b>0</b>		<b>80</b>	5.5 bar (80 psi)
SAE 10	<b>10T</b>		<b>160</b>	11.0 bar (160 psi)
SAE 12	<b>12T</b>			
			<b><u>Seals</u></b>	
			<b>N</b>	Buna N (Std.)
			<b>V</b>	Fluorocarbon
			<b>P</b>	Polyurethane

Note: Polyurethane seals required for operation over 241 bar (3500 psi).